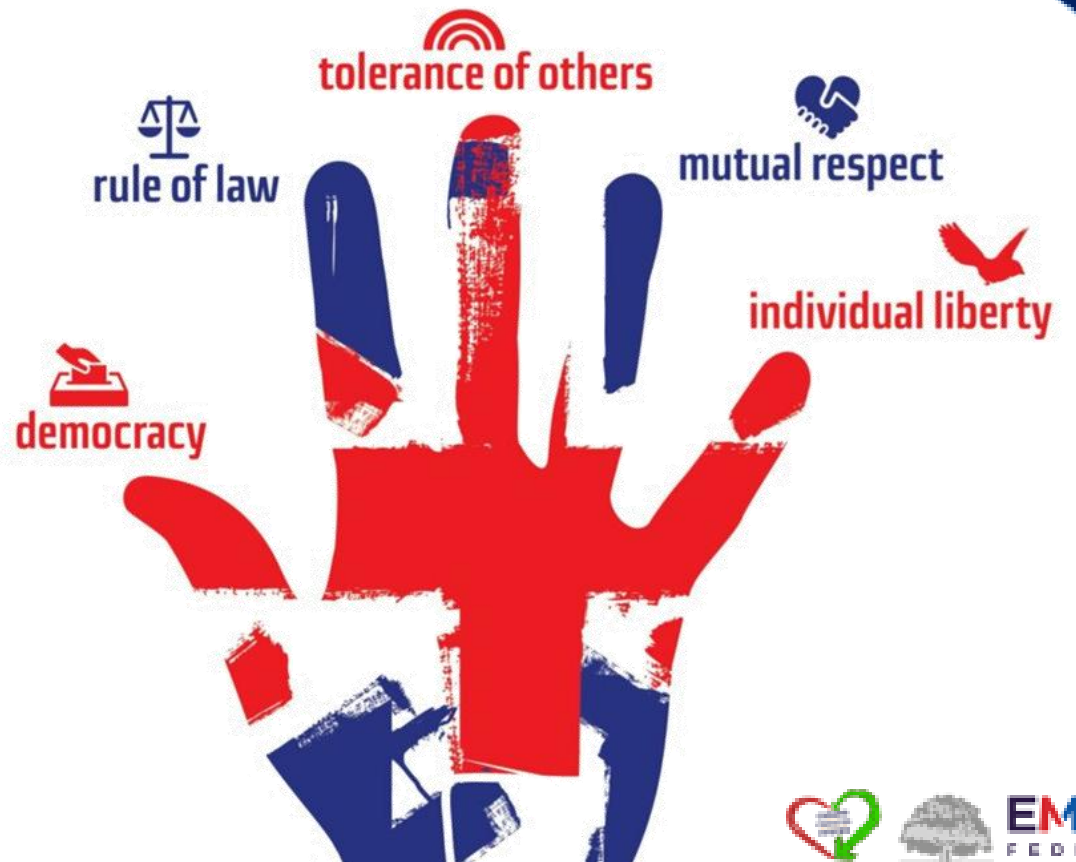


Respect, Tolerance and Liberty

British Values Year 7, Lesson 5



Rules for the Room

PSHE ground rules

What rules did you decide as a group?

Check the rules again in your book and make sure you keep them in mind when working in today's PSHE lesson.



Recall – Take 5



Consider the topic of last lesson,
DEMOCRACY





Can you recall and write down 5 things from last lesson in your books. You have 2 minutes to do this.

Compare your list with that of someone around you. Add anything new to your list.

Share and discuss as a class.

Aims and Objectives

By the end of this lesson, I will understand:

-  What Respect means., and why it is important
-  What tolerance is, and why it is important
-  What liberty is and why it is important
-  The significance of the 5 fundamental British Values.

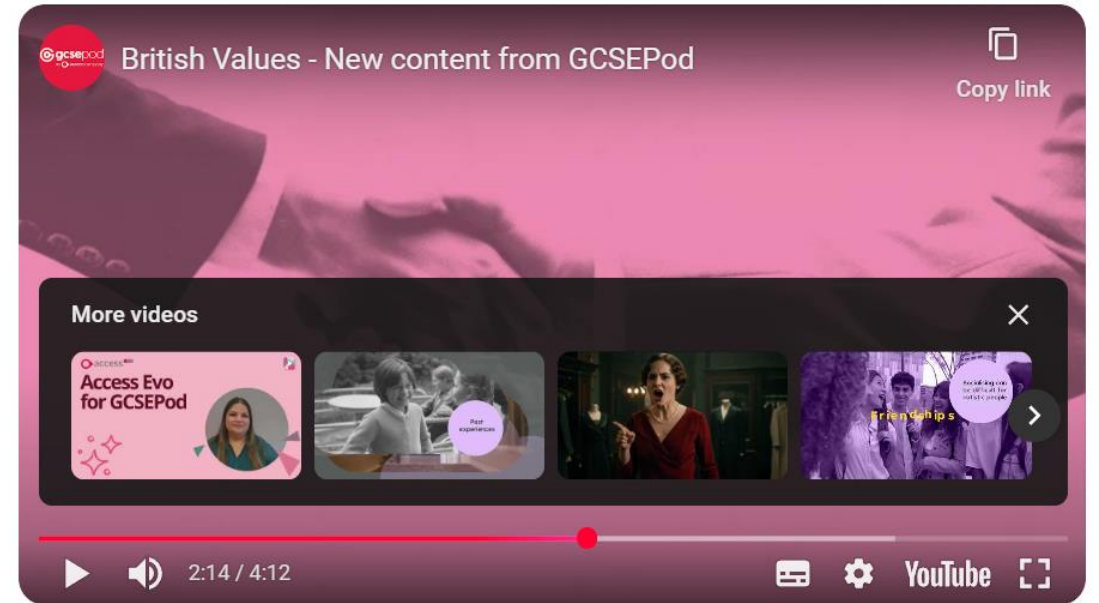
What is Respect?

Respect Definition

The true meaning of respect is to show high regard, honour, and esteem for someone or something, recognising their inherent worth and importance.

It involves valuing their feelings, opinions, and boundaries, even if you don't agree with them.

Practical ways to show respect include being a good listener, treating others kindly and politely, giving compliments, and considering their needs and privacy.



TASK: Read the definition and watch the video.

Write a definition of respect in your own words. Can you do it in less than 30 words?

Add this definition to your handprints.

Respect Role Play?

TASK: In pairs or small groups, develop a respectful role play for one of the following scenarios.

- Accidentally bumping into someone in the street
- You disagree with someone on a class project in school
- Someone new joins your football or sports team
- You walk into a job interview
- An examination is taking place in the hall and you have to walk past
- Someone has done something nice for you or helped you.

Act out your role play for the class. Do you all agree that respect was shown? Could it be improved?

Now do the same scenario, but show a level of disrespect. Do you see a difference?

Respect Role Play?

Discuss:

How do you know when someone is showing you respect?

What does respect look like in the classroom? On the playground?
Online?

How do you feel when someone doesn't respect you?

Why is it important to treat others with respect?



TASK: Answer these questions by adding information to your handprint.

What is Tolerance?

Tolerance is closely associated with respect.

Think/pair/share:

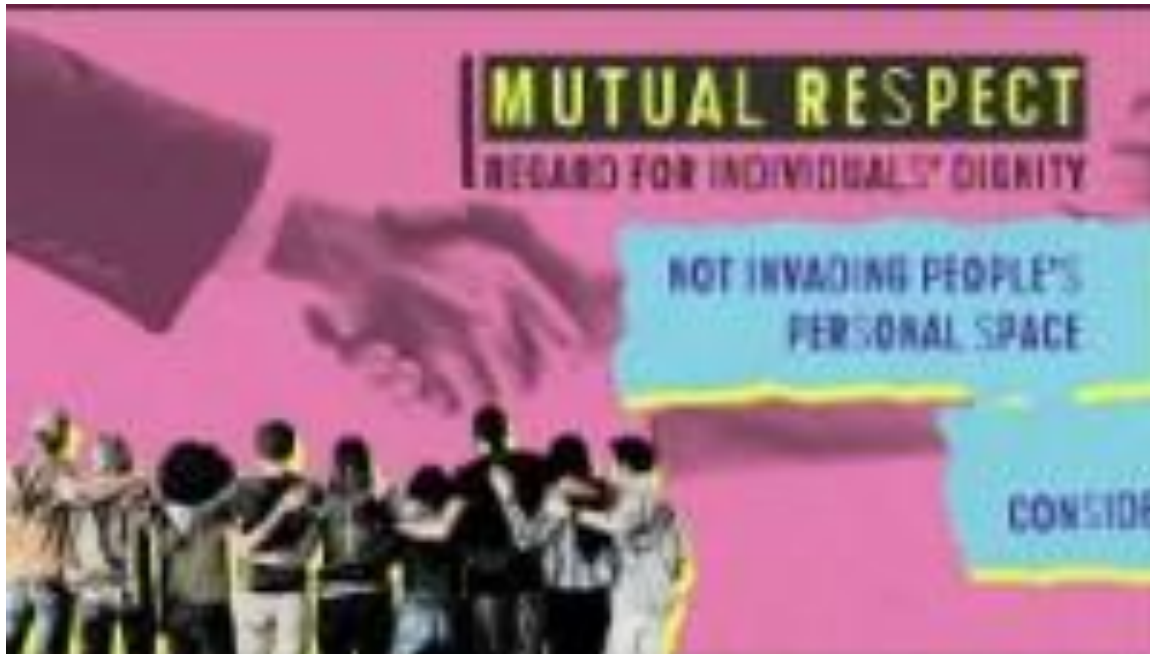
What does it mean to tolerate someone or something? Can you think of an example?



What is Tolerance?

TASK:

Watch the video below. With a partner can you define tolerance?



Tolerance definition

A willingness to accept feelings, habits, or beliefs that are different from your own.

TASK:

Add this definition to your handprints.

Tolerance Circle

TASK:

What makes you different?

Take turns to answer the following questions. Listen out for the similarities but also take note of the differences.

Are you more alike than different as a class?



Tolerance Circle

My favourite food is... ?

My family speaks... ?

I celebrate... ?

A place that is special to me is... ?

I would describe myself as... ?

Can you think of your own questions to show your differences/similarities?



Discuss:

What differences did you spot?

Tolerance

As you can see, each class, each community has differences. No two groups of people are alike.



Discuss:

Why is it good to have friends who aren't exactly like you?

How can we show tolerance when we don't agree with someone?

Why do you think the government included tolerance, when it drew up the list of the 5 fundamental British Values?

Why is it important to show tolerance for other people?

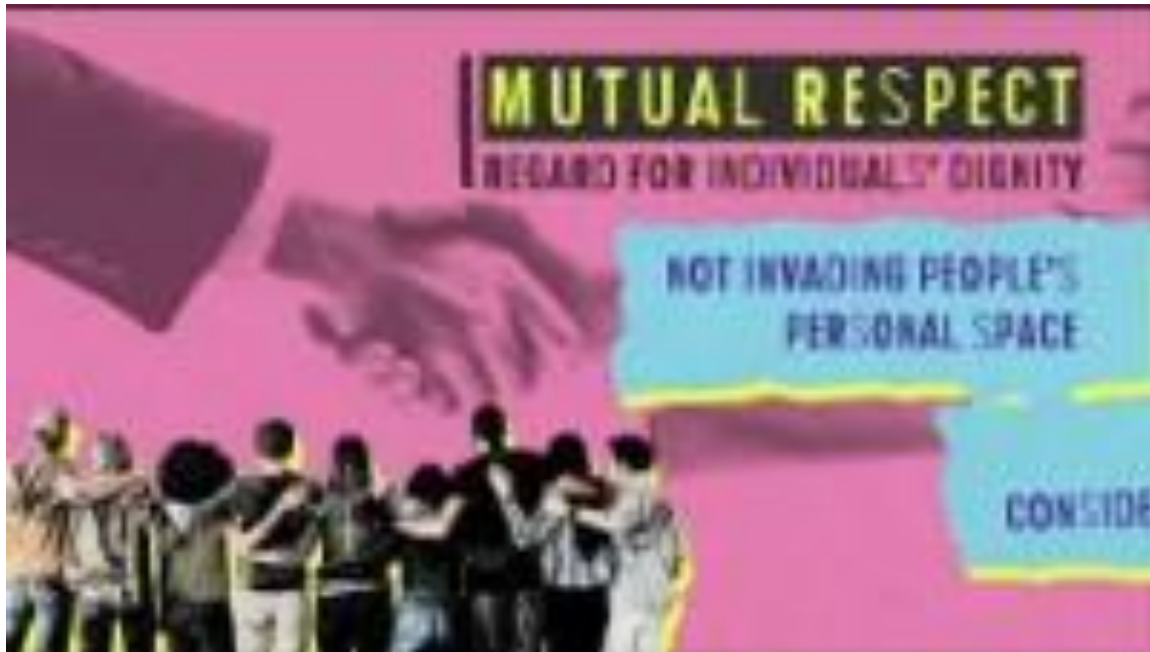
TASK:

Add your thoughts to your handprints.

What is Liberty?

TASK:

Watch the video below. With a partner, can you define liberty?



Liberty definition

Liberty is the state of being free within society from oppressive restrictions imposed by authority on one's way of life, behaviour, or political views..

TASK:

Add this definition to your handprints.

Liberty wall Debate

TASK:

Put signs up in different corners of the room: "Strongly Agree," "Agree," "Disagree," "Strongly Disagree."

Students should move to the corner of the room that best reflects their answer to the following statements. You **MUST** be able to explain why you chose to stand in that corner, so think carefully before moving.

Children should be able to dress as they wish

What is Liberty?

Discuss:

What freedoms do children have at school? At home? In the UK?

Why do you think some rules are needed, even when we want freedom?

Can freedom ever cause problems? What should we do then?



TASK:

Add your answers to your handprints.

Whiteboards

TASK: Using your whiteboards, answer the following questions.

True or false

Liberty means to accept views that are different
to your own

Answer: False

Whiteboards

TASK: Using your whiteboards, answer the following questions.

Being a good listener, treating others kindly and politely, and giving compliments are examples of what?

Answer: Respect

Whiteboards

TASK: Using your whiteboards, answer the following questions.

True or False

Tolerance is about celebrating people's similarities

Answer: False

Whiteboards

TASK: Using your whiteboards, answer the following questions.

What word best describes Liberty?

A: Freedom

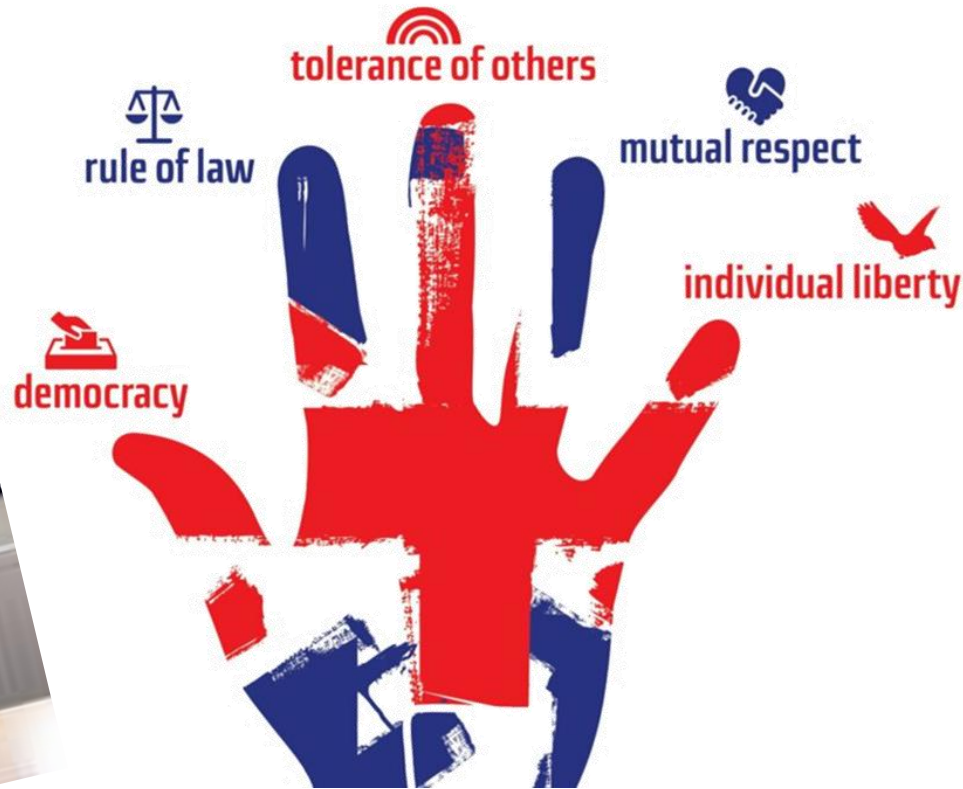
B: Love

C: Control

D: Disrespect

Answer: A

British Values



Think/Pair/Share: Which of the 5 fundamental British values do you think is the most important? .

Rank the values in order of importance in your books. And write an explanation for the one you chose as the most important.

Share as a class, and take a vote, which value did you think was the most important as a class?



Plenary

How do our values fit with the theme of today's lesson?

Which values have we dealt with today?

PARKSIDE VALUES

WHO WE ARE



RESILIENCE

The ability to recover quickly from difficult conditions and succeed.



RESPECT

Showing consideration and positive regard for others.



RESPONSIBILITY

The act of being accountable for actions and being in charge of learning.



COMMUNITY

Working together for great educational experiences.

EMBARK VALUES

WHO WE ARE



FAMILY

We are part of our own school family but also a wider federation family. Everyone is important and we work together to achieve the very best for our children.



INTEGRITY

'Doing the right thing when nobody is watching.' To have integrity you have to be committed, courageous, honest, disciplined and resilient.



TEAMWORK

We are proud of each other and our achievements. We rely on one another and understand that everyone has a part to play in our success.



SUCCESS

Success to us means every child and member of staff fulfilling their potential. We strive for everyone in our federation to 'be the best they can be.'

Safeguarding information

Who is your trusted adult in school?

If you have a problem, or need to speak to someone, contact one of the safeguarding team, or another trusted adult in school

We are here to support you with any challenges including...

- Keeping you safe
- Accessing Learning
- Self-discipline
- Mental Health and Wellbeing
- Relationships with others
- Staying Safe Online
- Self-identity

Who to talk to if you need support...



Mr Mills
Deputy Headteacher
Designated
Safeguarding Lead



Ms Michell
Early Help & Deputy
Safeguarding Lead



Ms Browes
Assistant Pastoral
Manager



Ms Bover
Assistant head
teacher for
Student Culture



Ms Welsh
Senior Leader for
Student Behaviour
& Attitudes



Mr Fletcher
Pastoral Manager



Ms Beardsmore
Community support
and Early Help

Parkside Support Centre Staff
All other Parkside Staff
Email Reporting

If you don't feel like you can talk to anybody, please email:
safeguarding@parkside.derbyshire.sch.uk